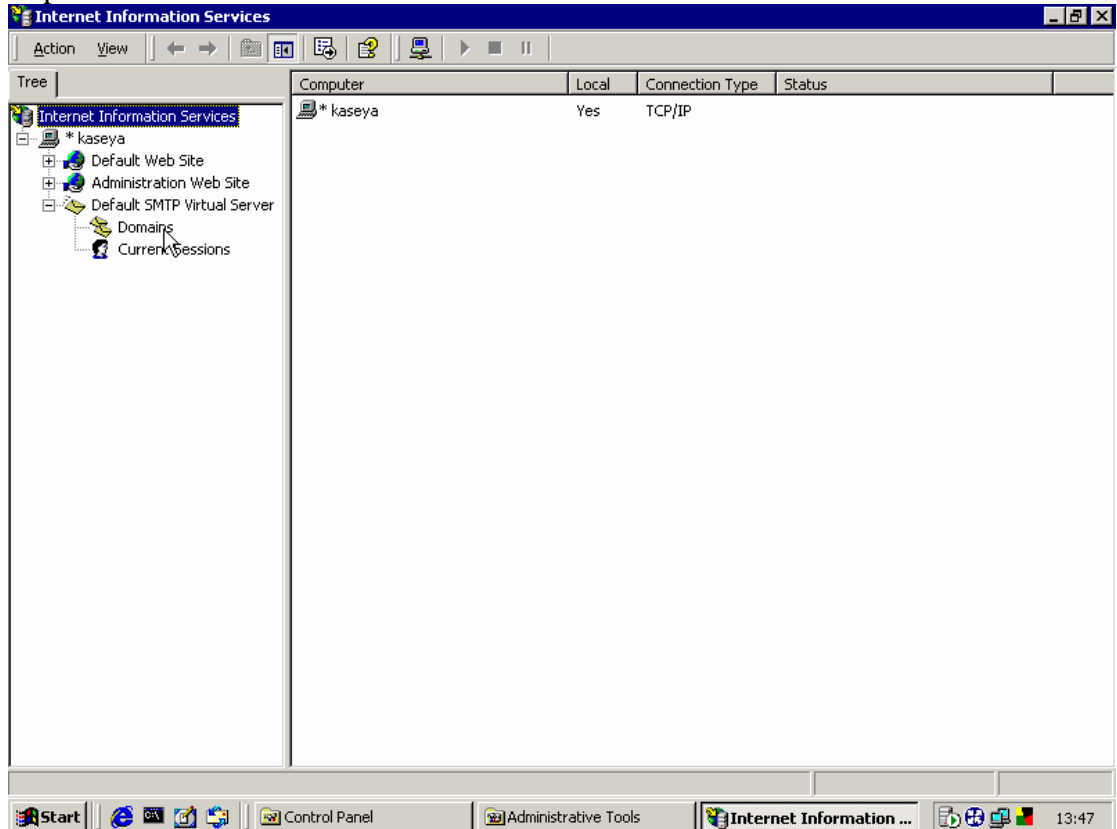


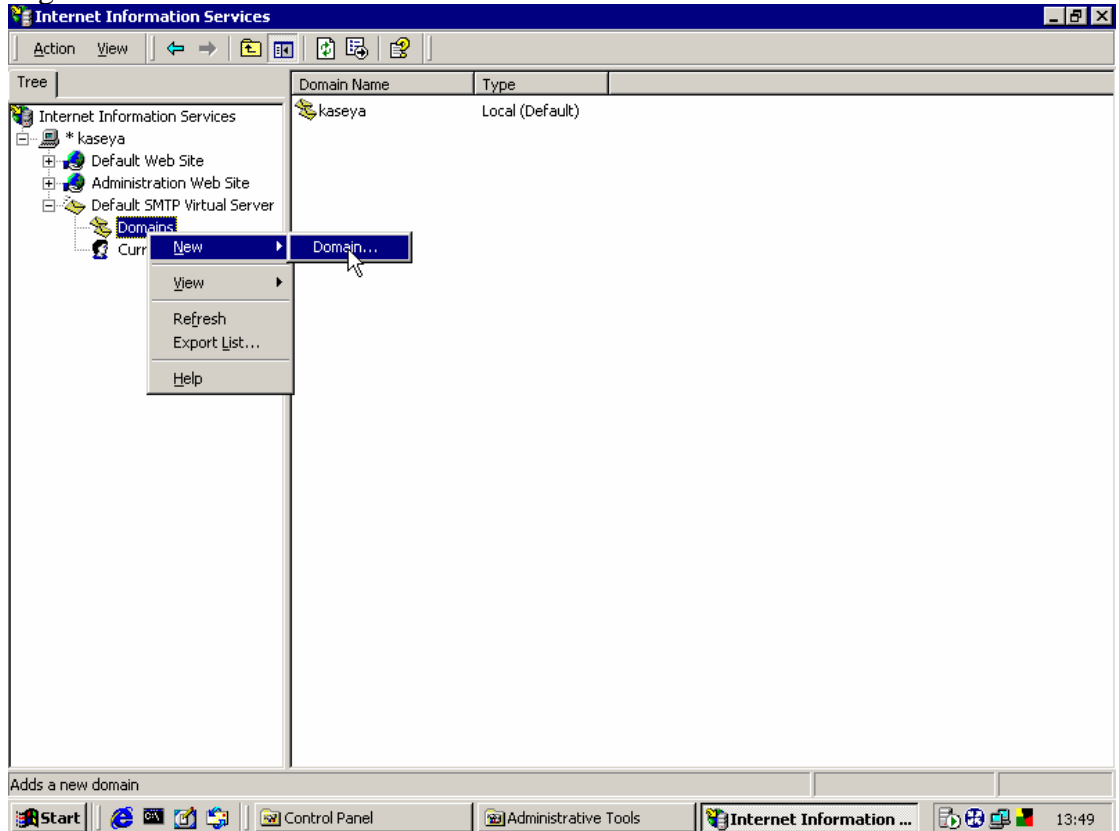
Configuring SMTP for Internal mail servers

To configure Kaseya to send mail to your internal mail server, do the following

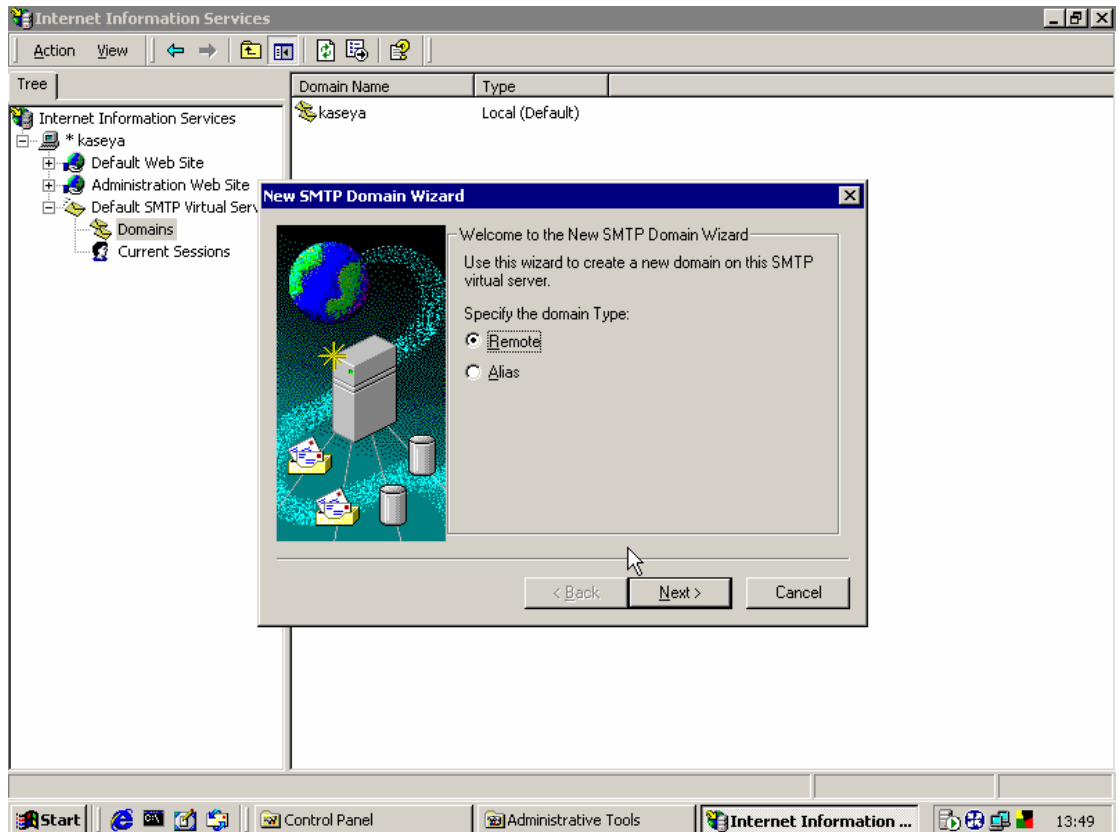
1. go to start → settings → control panel → administrative tools → Internet Services manager
2. Expand the Default SMTP server list.



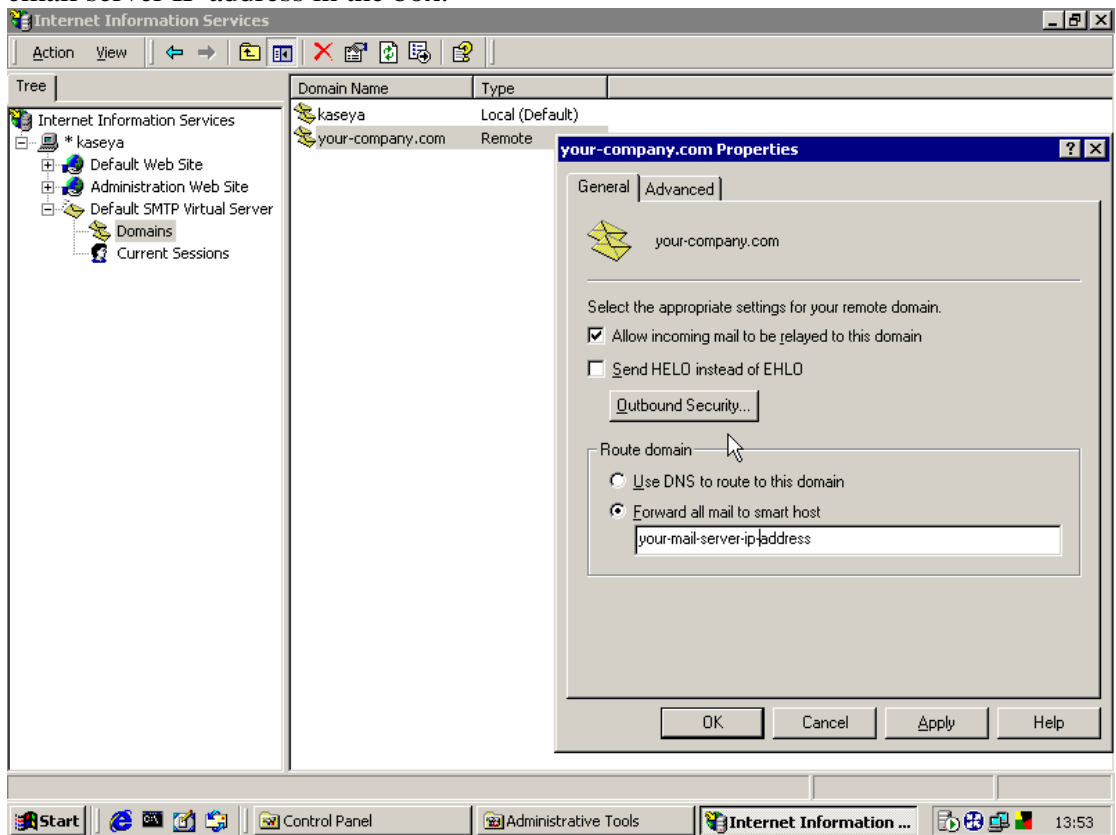
3. Right click on the word 'Domains' and select 'New domain'.



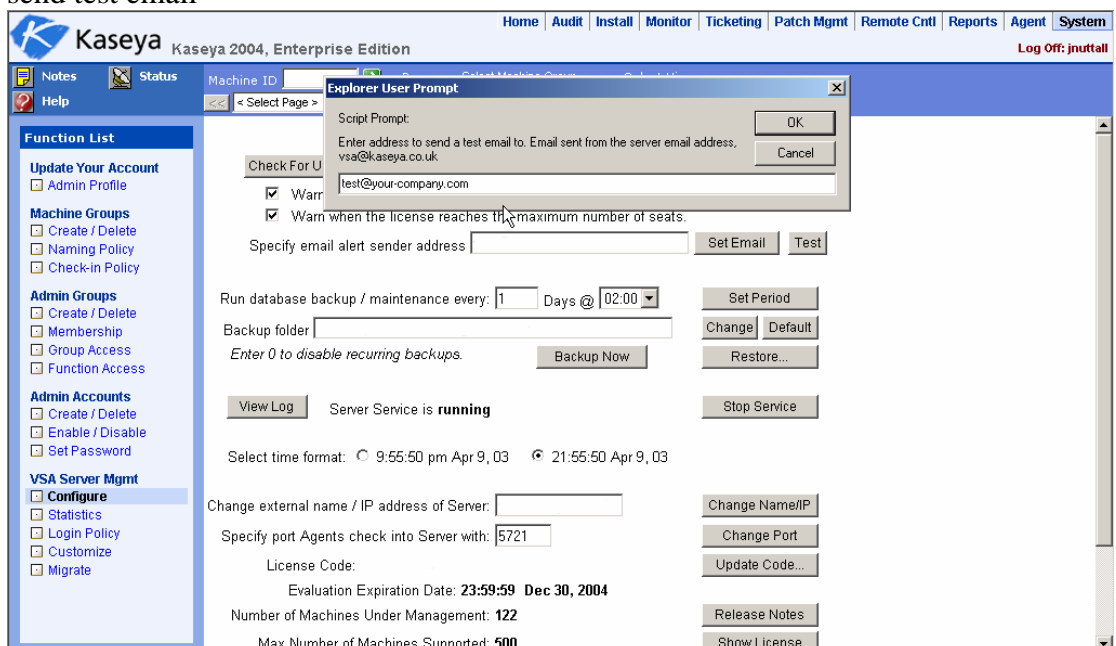
4. Select Remote and click next.



5. Tick the box that allows incoming connections, and enter your companies email server IP address in the box.



6. Click ok and the process is complete. This will tell the SMTP server to send any mail to user@your-company.com to the email server that you specified.
7. You can now test this by logging in to Kaseya → systems tab → configure → send test email



8. If you don't receive the test email within 5 minutes, check your Kaseya server's system event logs for any errors from SMTPSVC, these will give you a clue as to the point of failure.